

# CERTIFICATE OF LOCATION OF GOVERNMENT CORNER

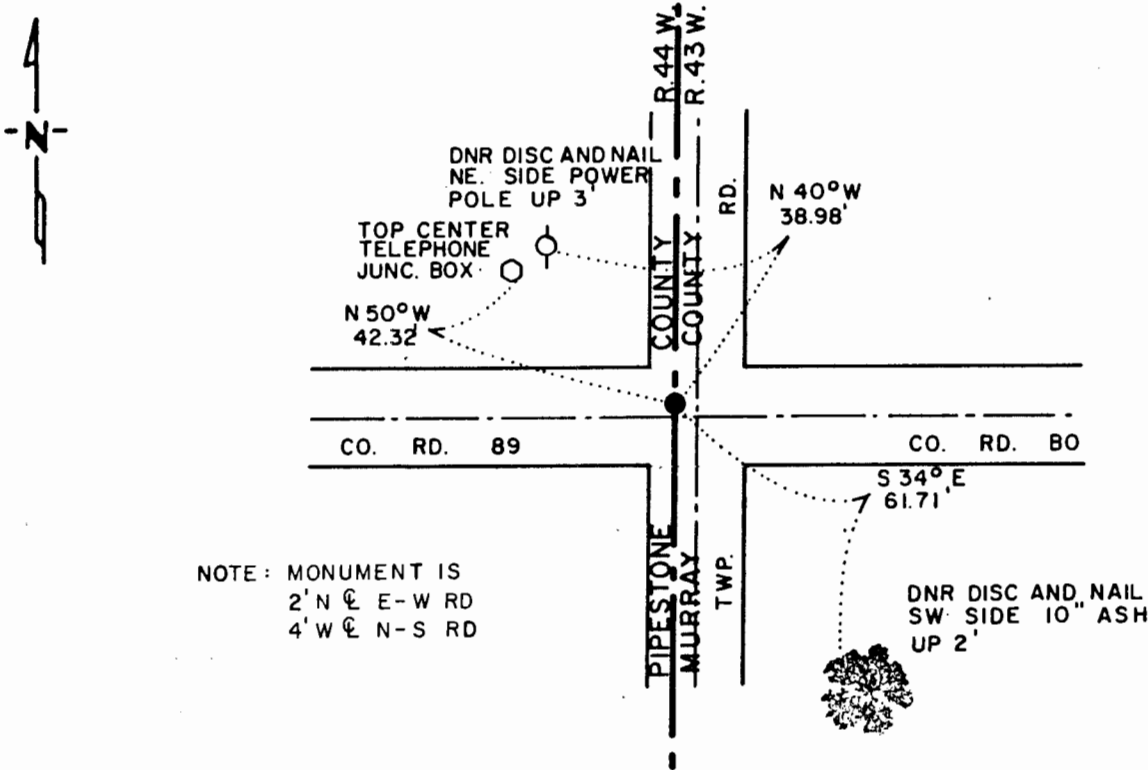
NORTHWEST Corner of Section 18, Township 108 N., Range 43 W., 5th P.M.

STATE OF MINNESOTA, County of MURRAY

At the corner location shown on the sketch:

- On 7-6-82 found a 6"x10"x12" CONCRETE CYLINDER, DOWN 21"  
DATE
- left monument as found,  lowered monument,  removed monument (explain)
- On 7-6-82 placed a 1/4"x1/4"x20" PERFORATED STEEL TUBE WITH  
DATE ALUMINUM CAP STAMPED "DNR SURVEY MARKER", DOWN 0.4'

## SKETCH OF REFERENCE TIES



TIES TAKEN 8-5-86  
BEARINGS OBSERVED WITH COMPA33

Statement of evidence relative to this corner location is on back of page.

J. A. G. 8-18-86  
FILE G-202

I hereby certify that this document and the data contained herein was prepared by me or under my direct supervision.

Lowell B. Pommeroy Jr. 9-10-86  
SIGNATURE DATE

Registration No. 17005  
 Land Surveyor,  Professional Engineer  
 County Surveyor,  County Engineer

OFFICE OF THE COUNTY RECORDER  
County of \_\_\_\_\_

I hereby certify that this document was filed in the Co. Recorders office at \_\_\_\_\_ .M. on the \_\_\_\_\_ day of \_\_\_\_\_ A.D., 19 \_\_\_\_\_

County Recorder \_\_\_\_\_  
By \_\_\_\_\_, Deputy

DOCUMENT NO. \_\_\_\_\_

Northwest Corner Section 18, Township 108 North, Range 43 West

This corner was originally established by the U. S. General Land Office survey in 1861. The government notes show corner marked with a wood post set in mound of earth with pits and trench dug around the mound also deposited charcoal.

In June 1982, the DNR Bureau of Engineering contacted the following for corner information:

Murray County Offices of the Recorder and Highway Engineer  
Pipestone County Office of the Recorder

The following information was obtained from the Murray County Highway Engineer's Office:

Surveyor's Record Book contains ties to government corners in Section 7, surveyor not indicated, dated 1940. Corner is shown as a concrete stone with ties:

R. P. tack in corner fence post 37.4 ft.

R. P. tack in corner fence post south on line 34.3 ft.

This information also appears on a county corner tie sheet, dated 1940.

On July 6, 1982, the DNR Bureau of Engineering hired a backhoe operated by Buffalo Ridge Plumbing and Heating of Ruthton to dig for evidence of this corner. Dug a 8 ft. north-south by 10 ft. east-west hole, the center being at the intersection of roads north-south and east-west. Found a 6" top diameter by 10" bottom diameter by 12" long concrete cylinder down 21", bottom at natural ground. Probed to a depth of 60" but found nothing else. Searched for but did not find any record ties. Left monument as found and measured:

2540.23 ft. from the north quarter corner Section 18

2655.77 ft. from the west quarter corner Section 7

Monument is 2 ft. north and 4 ft. west of intersection of above mentioned roads.

Accept the concrete monument as the location of the corner.

Traverse information is available from the DNR Bureau of Engineering.

On August 5, 1986, revisited the corner and found the DNR Survey Marker as previously set in good condition and took ties as shown.

S147